

Room Schedule

Living

Kitchen / Dining

Bedroom 1

Bedroom 2

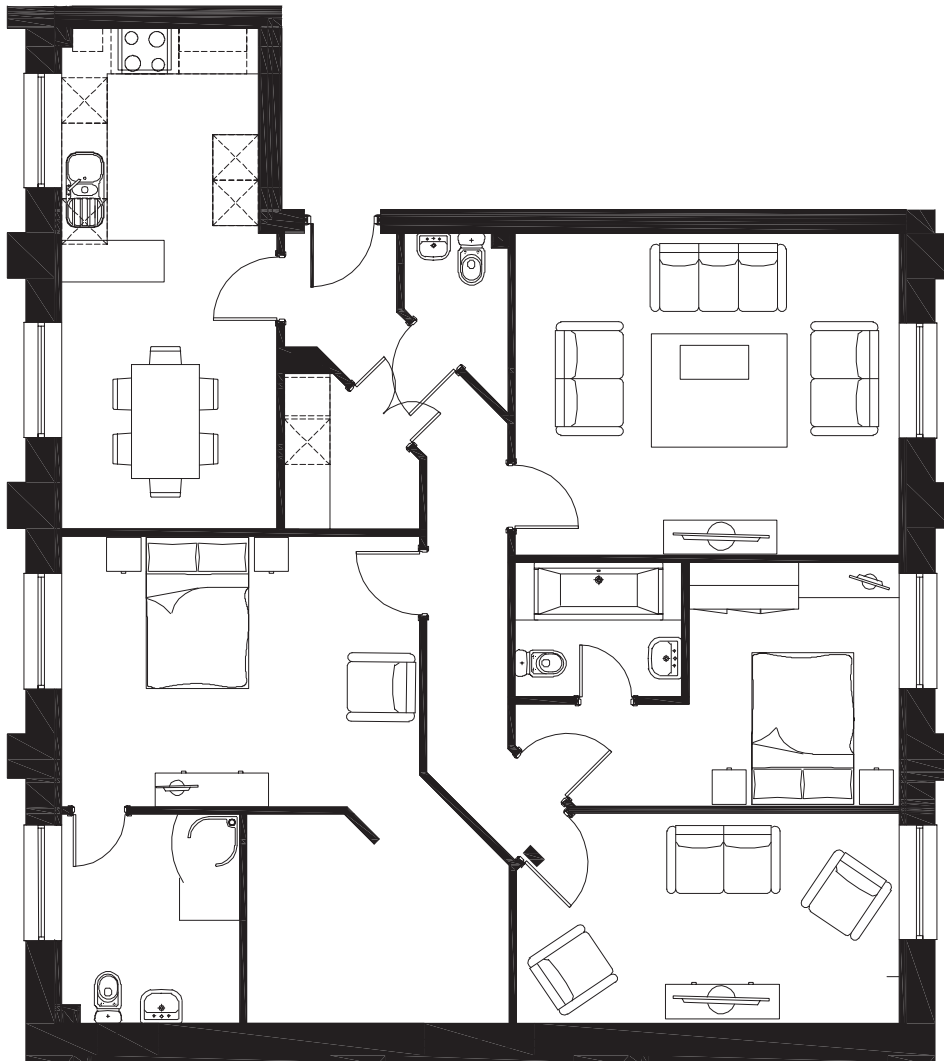
Size

5.077m x 4.260m (Max)
16'8" x 14'0" (Max)

2.850m x 6.623m (Max)
9'4" x 21'9" (Max)

4.731m x 3.578m (Max)
15'6" x 11'9" (Max)

5.077m x 3.217m (Max)
16'8" x 10'7" (Max)



For further information regarding this apartment please email enquiries@derwent-house.com or telephone 01282 772 255

The dimensions shown on the floor plans of our apartments are approximate: each apartment is built individually and so the precise measurements may vary from that shown although every endeavour is made to make the dimensions as accurate as possible. We give maximum dimensions that include fitted wardrobes, sloping ceilings, bay windows and any other features.